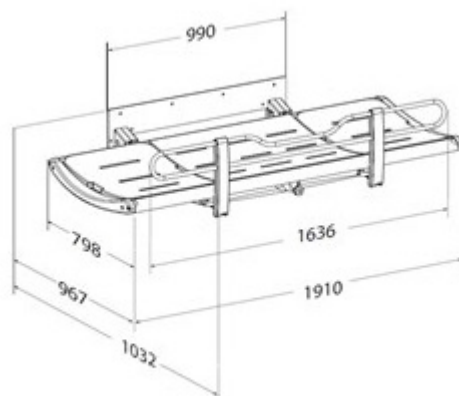
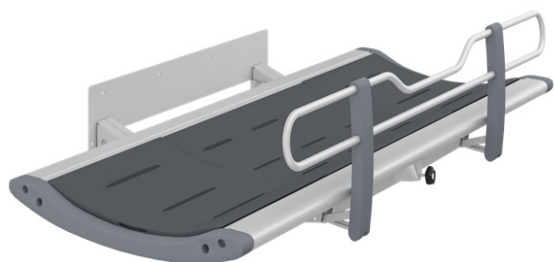


## **PR-R84353xxxx** PRESSALIT FIXED HEIGHT SHOWER CHANGE TABLE



### **DESCRIPTION**

The Pressalit fixed height shower change table is designed to provide a stable platform for showering and changing adults and children with reduced mobility.

The SCT3000 fixed shower change table has a fixed height. The unit comes with intergrated gas cylinders that enable the table to be folded out of the way when not in use to maximise floor space.

The ergonomically designed safety rails have a practical lower central section, which provides better access and work environment for the carer while transferring, showering, drying, changing and dressing the user.

A water collection tray with integrated water outlet prevents water from splashing on carers or the floor. The flexible hose (Ø32 mm) attached to the center mounted outlet of the water collection tray, can be connected to either an outlet in the floor or on the wall.

NOTE: It is the responsibility of the installer to ensure that suitable wall fastners are used. Product does not come with fixing kit.

### **PRODUCT**

Material: Powder-lacquered stainless steel aluminium and plastic. Pads in polyurethane foam  
Colour: Graphite grey (RAL 7024)  
Maximum user weight: 200kg  
Safe Working load: 210kg

When the table is loaded with 200kg each mounting bolt supports 60kg.

### **MODELS**

PR-R8435318301 - Pressalit Shower Change Table, Fixed Height Graphite Grey 1910mm.  
PR-R8435318299 - Pressalit Shower Change Table, Fixed Height Sapphire Blue 1910mm.  
PR-R8435313301 - Pressalit Shower Change Table, Fixed Height Graphite Grey 1410mm.  
PR-R8435313299 - Pressalit Shower Change Table, Fixed Height Sapphire Blue 1410mm.