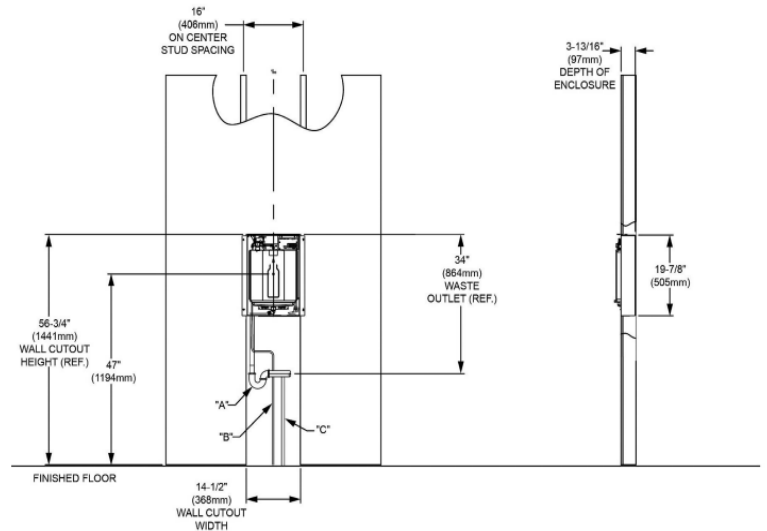


EL-LBWD2C00xxC

ZURN ELKAY IN-WALL FILTERED WATER DISPENSER BLACK



DESCRIPTION

The Zurn Elkay ezH2O Liv® Pro allows you to serve guests and colleagues cleaner, healthier water in a sustainable way with a stylish in-wall filtered water dispenser. This hands-free water dispenser is designed for commercial and hospitality environments such as lobbies and conference rooms. Say goodbye to ordering expensive disposable bottled water that takes up precious storage space. Finished with a white glass front panel, this bottle filler looks great in any space. The ezH2O Liv can be mounted with a filter box mounted below or without filter box mounted below. If access to the filter is accessible away from the filler, then no box required. As standard, this is a non-chilled bottle filler, but a chiller can be added to offer chilled water.

MODELS

- EL-LBWD2C00BKC** - Zurn Elkay In-Wall Filtered Water Dispenser Black
- EL-LBWD2C00WHC** - Zurn Elkay In-Wall Filtered Water Dispenser White
- EL-ER101Y** - Zurn Elkay Remote Chiller Non-Filtered Refrigerated 40L/Hour

Replacement Filters

- EL-51300C** - Zurn Elkay WaterSentry® Replacement Filter.
- EL-51300C-3PK** - Zurn Elkay WaterSentry® Pack Of 3x Replacement Filters

PRODUCT ADVANTAGES

Fits within the width and depth of two wall studs near water and electric services; includes drip tray with optional drain connection. Filter is certified to NSF standards to reduce lead and other contaminants. Filter box and remote filter cable included; optional for install.

Colorful lights indicate when quick and easy filter changes are needed.

Backlit LED Green Ticker™ counts the equivalent number of disposable, single-use plastic bottles served without the plastic bottle waste

Self-serve design allows people to help themselves to refreshing water in an environmentally friendly way. Hands-free filling with automatic timed shut off to help prevent accidental spills and messes.

Glass-front and brushed stainless steel design looks great in any space; interactive lighting brightens when dispensing water.

Unit can be installed with or without a chiller. Various options available, based on application; chiller sold separately. Optional setting prevents unsupervised use. Water pressure requirements: 280 - 735kPa, optimum pressure 420kPa.

Note that if the water dispenser is installed with a remote chiller, the filter should also be installed remotely near the chiller.

Electrical: 230V 50Hz



**MACDONALD
 INDUSTRIES LIMITED**

Auckland (Head Office)

20 Carr Rd, Three Kings
 Auckland 1042
 P: 09 624 1115

E: sales@macdonaldindustries.co.nz

Wellington

P: 04 569 8033

www.macdonaldindustries.co.nz

Christchurch

32B Hayton Road, Wigram
 Christchurch
 P: 03 348 2356